

NOTE:
 THIS MAP IS FOR ILLUSTRATIVE
 PURPOSES ONLY. ACTUAL LOCATION
 OF ZONING BOUNDARIES ON SPECIFIC
 PARCELS SHALL BE FIELD LOCATED
 BY A REGISTERED LAND SURVEY.



MAGNETIC NORTH
 TRUE NORTH
 DECL. 1°18'E
 CHANGING BY 0.7"/YEAR
 (2009, NATIONAL GEOPHYSICAL DATA CENTER)

BOLTON & MENK, INC.
 Consulting Engineers & Surveyors
 MANKATO, MN FAIRMONT, MN SLEEPY EYE, MN WILLMAR, MN
 BURNSVILLE, MN CHASKA, MN RAMSEY, MN MAPLEWOOD, MN AMES, IA

REV.	BY	DATE

BUFFALO MUNICIPAL AIRPORT
 AIRPORT ZONING ORDINANCE
 LAND USE SAFETY ZONES MAP

EXHIBIT
 1

Perpetual Avigation Easement

Wright County Recorder Document 411401, Misc. Book 88 p. 571, June 30, 1986

"The Grantors... retain the use, and the right to perform normal maintenance and repair in their present form and location the following: 1. Residence and homestead with attached garage; 2. Machine shed; 3. Cattle/hay shed; 4. Grain bin; 5. Corn crib; 6. Storage bin"

"In the event of a catastrophe... Grantors shall have the right to replace the buildings at their present size and height and the right to replant trees capable of growing to the height of the present trees."

"The Grantors... give and grant to the Grantee a continuing right of entry upon the aforesaid land for the purpose of removing and preventing the construction or erection of any buildings, structures, or facilities and the growth of any trees or other objects upon the land, other than those herein expressly excepted."

"Grantors hereby grant permission to Grantee to erect upon the property described in paragraph 1 three 60 foot high poles, each containing two red non-blinking lights containing a 45 degree shield, the location of each pole to be where deemed appropriate by Grantee and the Minnesota Department of Transportation, Aeronautics Division."

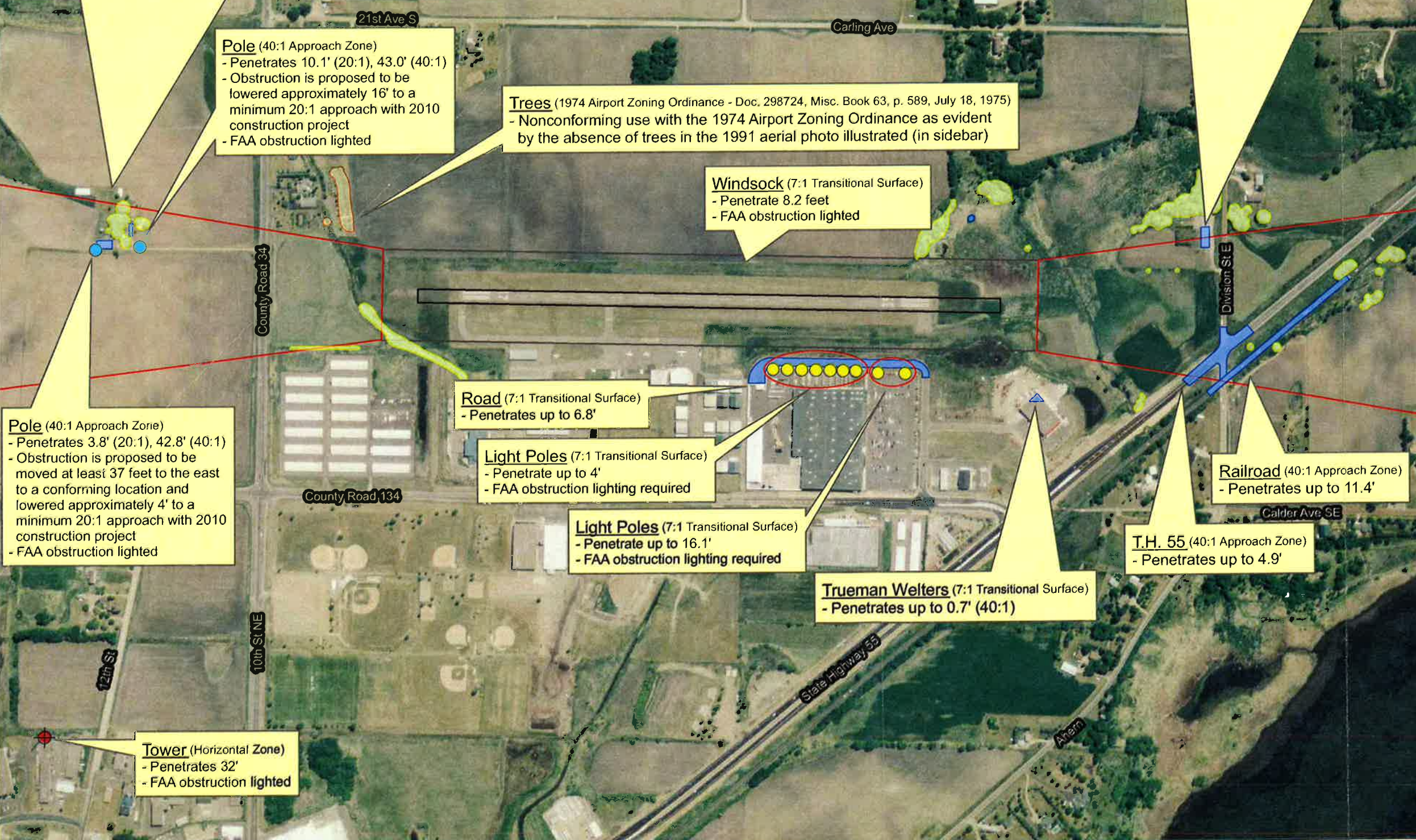
Perpetual Avigation Easement

Wright County Recorder Document 396501, Misc. Book 86 p. 101, May 17, 1985

"The Grantors... agree that they will not erect, maintain or allow any buildings, structure, or objects to remain or be placed on the real estate described in paragraph 1 herein..."

"The Grantors... grant to the Grantee a continuing right of entry upon the aforesaid land for the purpose of removing and preventing the construction or erection of any buildings, structures, or facilities and the growth of any trees or other objects upon the land, other than those herein expressly excepted."

- October 1991, 44'x112' pole building improperly located within runway protection zone and avigation easement
- Building penetrates 7.0' (40:1)



**Buffalo Municipal Airport
Airport Zoning Ordinance**

Legend

Known Points of Air Space Obstructions

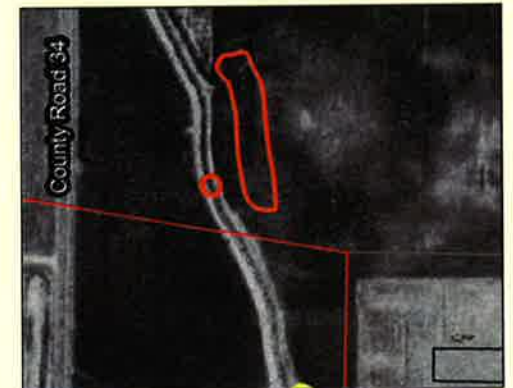
- Light Pole*
- Pole
- Tower

Known Areas of Air Space Obstructions

- Structure
- Vegetation
- Vegetation (1974)

Land Use Safety Zones

- Runway 17-35
- Primary Surface
- Air Space Approach Surface



Trees Expanded - LMIC 1991

Source: LMIC Aerial Photography



0 600 Feet

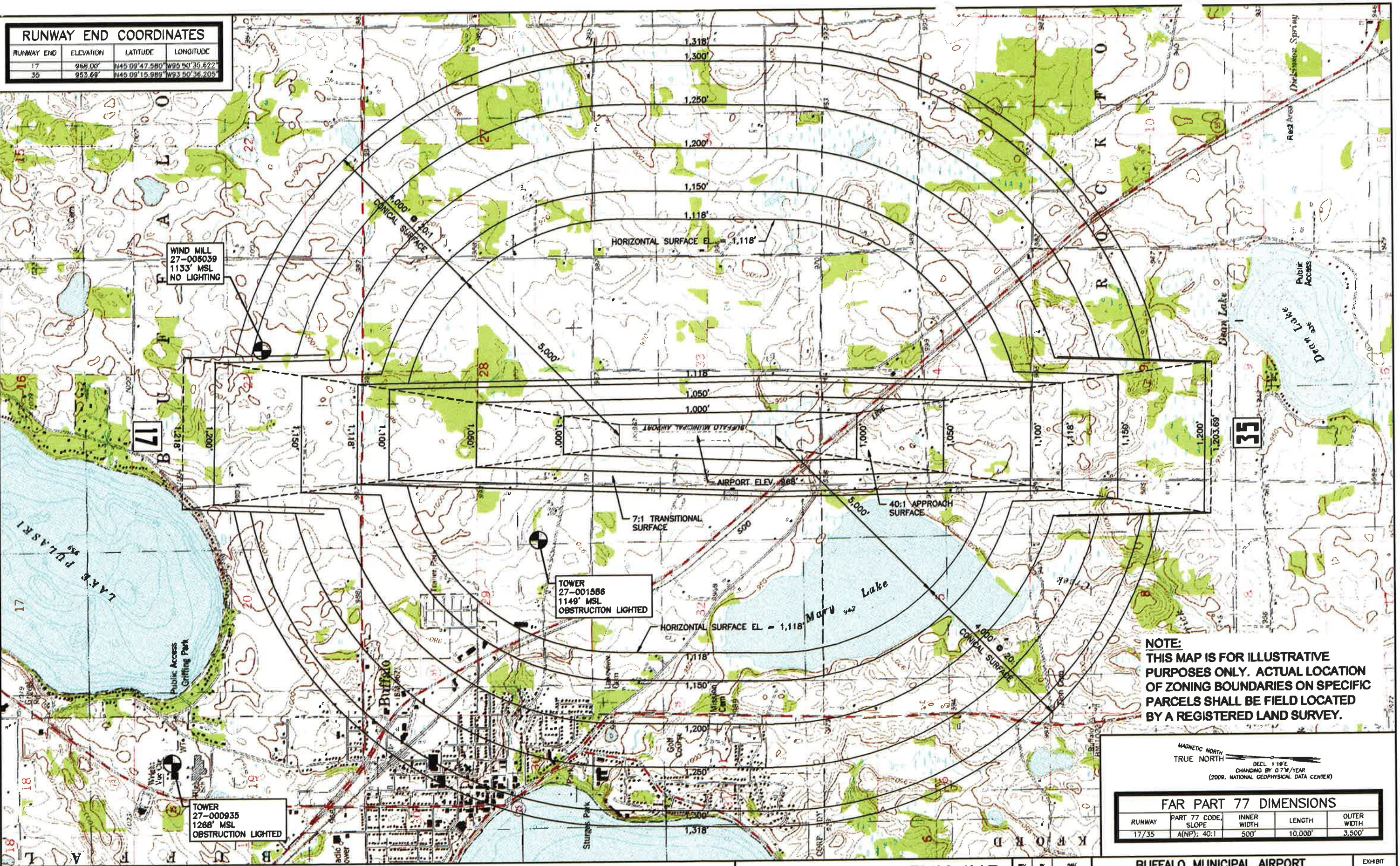
**Known Variance
and Non-Conformity
Locations**

Exhibit 2

August 25, 2010



RUNWAY END COORDINATES			
RUNWAY END	ELEVATION	LATITUDE	LONGITUDE
17	968.00'	N45 09' 47.580" W93 50' 35.622"	
35	953.69'	N45 09' 15.989" W93 50' 36.205"	



WIND MILL
27-006039
1133' MSL
NO LIGHTING

TOWER
27-001586
1149' MSL
OBSTRUCTION LIGHTED

TOWER
27-000935
1268' MSL
OBSTRUCTION LIGHTED

NOTE:
THIS MAP IS FOR ILLUSTRATIVE PURPOSES ONLY. ACTUAL LOCATION OF ZONING BOUNDARIES ON SPECIFIC PARCELS SHALL BE FIELD LOCATED BY A REGISTERED LAND SURVEY.

MAGNETIC NORTH
TRUE NORTH
DECL. 1 19' E
CHANGING BY 0.7"/YEAR
(2009, NATIONAL GEOPHYSICAL DATA CENTER)

FAR PART 77 DIMENSIONS				
RUNWAY	PART 77 CODE, SLOPE	INNER WIDTH	LENGTH	OUTER WIDTH
17/35	A(NP); 40:1	500'	10,000'	3,500'

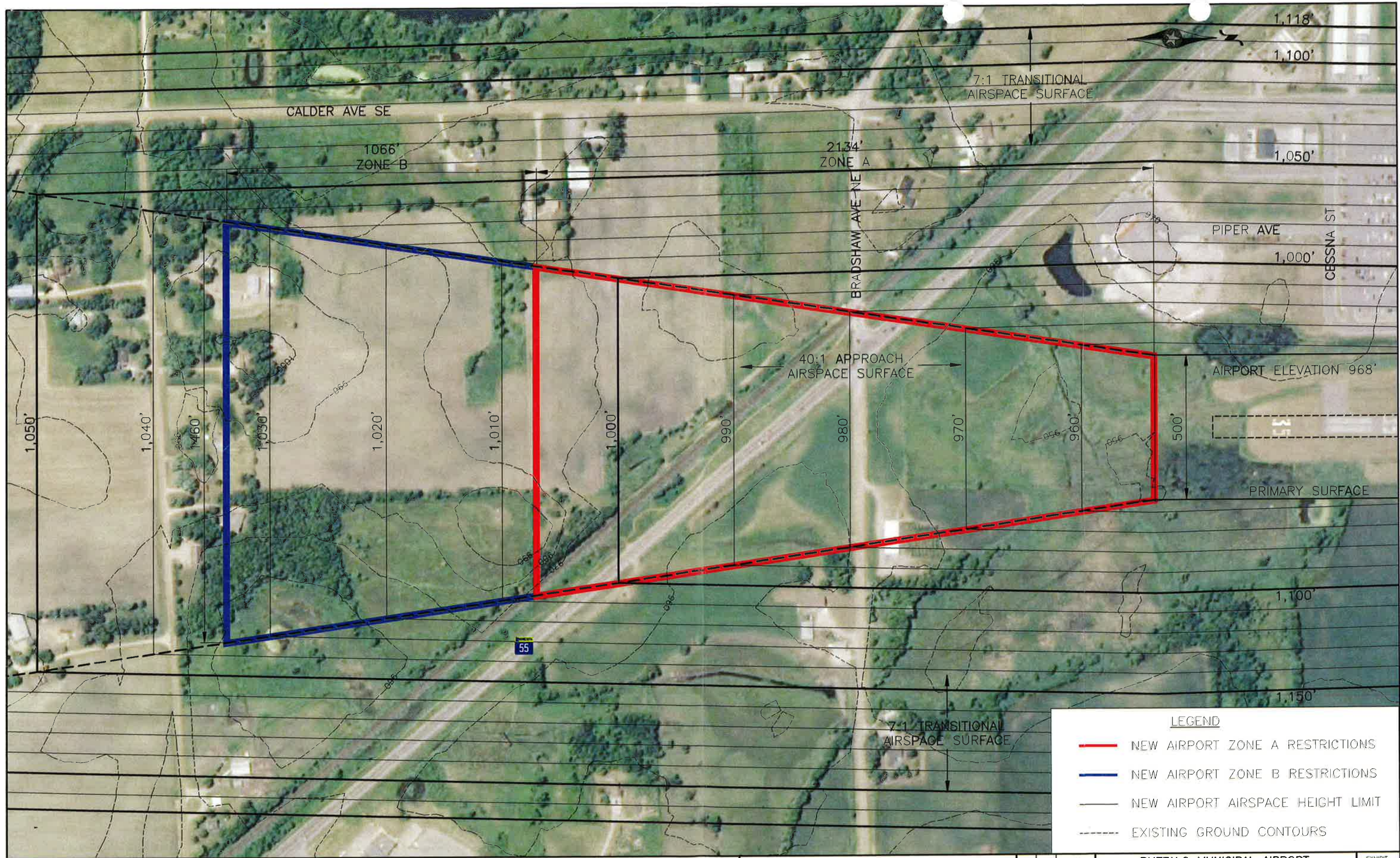


BOLTON & MENK, INC.
Consulting Engineers & Surveyors
MANKATO, MN FAIRMONT, MN SLEEPY EYE, MN WILLMAR, MN
BURNSVILLE, MN CHASKA, MN RAMSEY, MN MAPLEWOOD, MN AMES, IA

REV.	BY	DATE

BUFFALO MUNICIPAL AIRPORT
AIRPORT ZONING ORDINANCE
AIRSPACE MAP

©Bolton & Menk, Inc. 2009. All Rights Reserved
H:\Buff\141101050\CAD\AIRSPACE.dwg 6/15/10 9:29 am



LEGEND	
	NEW AIRPORT ZONE A RESTRICTIONS
	NEW AIRPORT ZONE B RESTRICTIONS
	NEW AIRPORT AIRSPACE HEIGHT LIMIT
	EXISTING GROUND CONTOURS

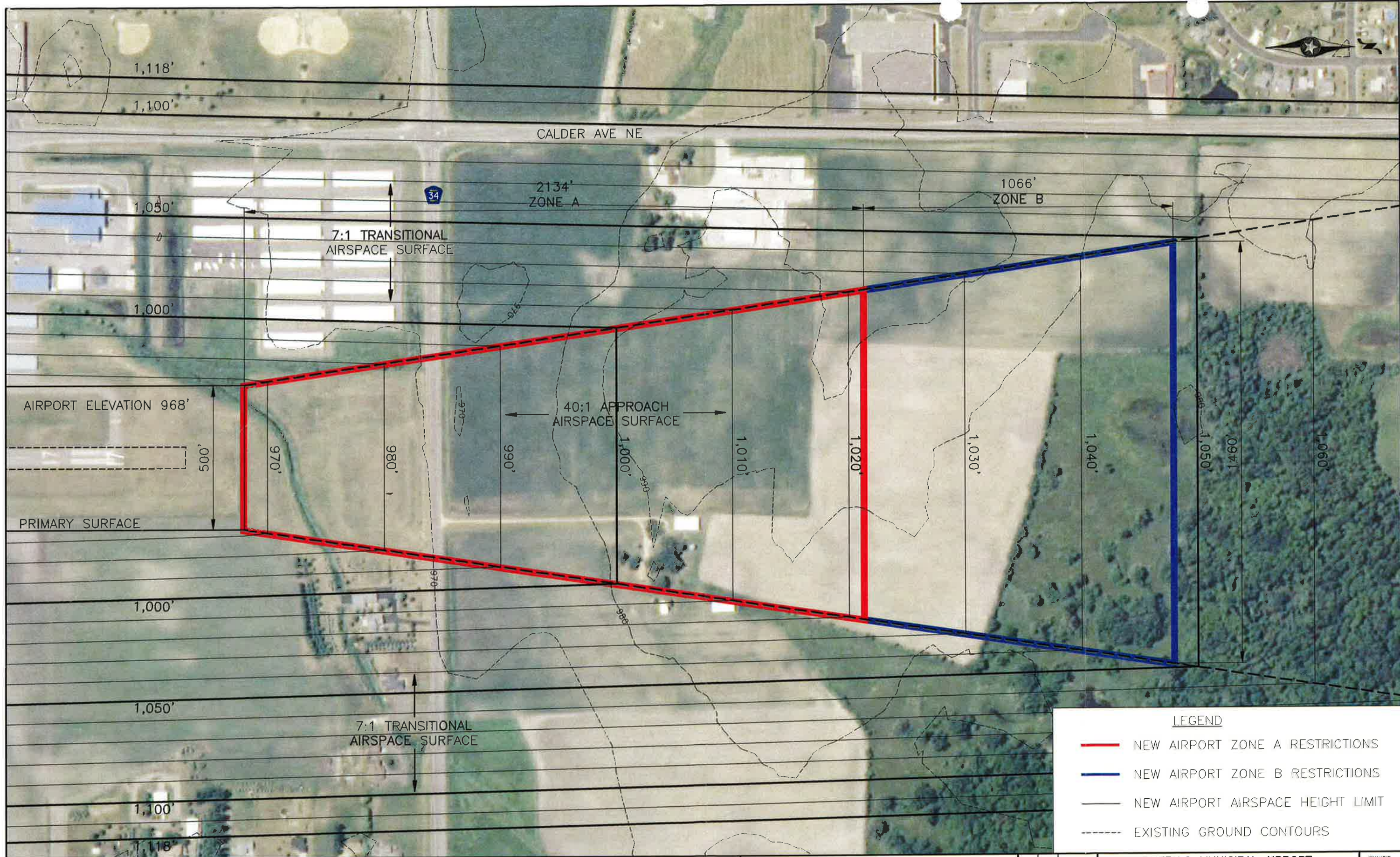


BOLTON & MENK, INC.
 Consulting Engineers & Surveyors
 MANKATO, MN FAIRMONT, MN SLEEPY EYE, MN
 BURNSVILLE, MN WELLMAR, MN CHASKA, MN
 RAMSEY, MN MAPLEWOOD, MN BRANNEO, MN AMES, IA

REV.	BY	DATE

BUFFALO MUNICIPAL AIRPORT
 AIRPORT ZONING ORDINANCE
RUNWAY 35 APPROACH RESTRICTIONS

EXHIBIT
3.1



LEGEND

	NEW AIRPORT ZONE A RESTRICTIONS
	NEW AIRPORT ZONE B RESTRICTIONS
	NEW AIRPORT AIRSPACE HEIGHT LIMIT
	EXISTING GROUND CONTOURS

0 150 300
SCALE FEET

©Bolton & Menk, Inc. 2010. All Rights Reserved.
H:\BUFF\141101550\PLANS\Runway 17 Airspace.dwg 9/16/10 1:09 pm

BOLTON & MENK, INC.
Consulting Engineers & Surveyors
MANKATO, MN FAIRMONT, MN SLEEPY EYE, MN
BURNSVILLE, MN WILLMAR, MN CHASKA, MN
RAMSEY, MN MAPLEWOOD, MN BRAINERD, MN AMES, IA

REV.	BY	DATE

BUFFALO MUNICIPAL AIRPORT
AIRPORT ZONING ORDINANCE

RUNWAY 17 APPROACH RESTRICTIONS

EXHIBIT
3.2